

NOTE- PERFORMANCE AS PER ISO 9906 GRADE-2B

PERFORMANCE CURVE OF ES 150-200 @2900 R.P.M

ES 150-200/X/403452



PUMPSENSE

ISO 2858

ES RANGE

MODEL ES 150-200

WORKING PRESS. 16 bar

SIZE 200x150-218

TEST PRESS. 24 bar

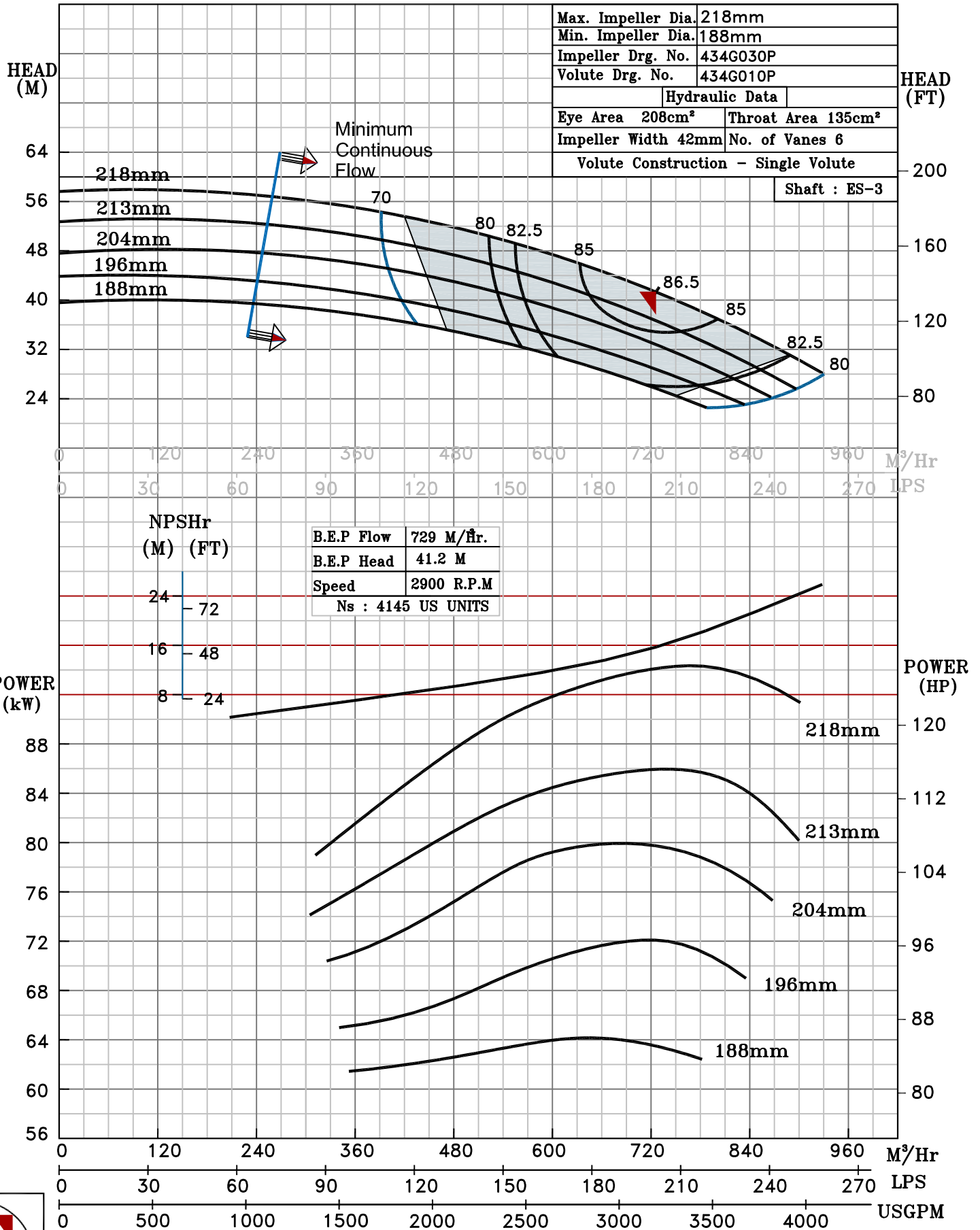
TYPE - END SUCTION BACK PULL OUT

SPEED 2900 rpm

SHADED REGION ON THE H-Q CURVE REPRESENTS OPTIMUM SELECTION ZONE

PUMP PERFORMANCE CHARACTERISTICS COMPUTED BASED ON CLEAN COLD WATER S.G 1.0

Max. Impeller Dia.	218mm
Min. Impeller Dia.	188mm
Impeller Drg. No.	434G030P
Volute Drg. No.	434G010P
Hydraulic Data	
Eye Area	208cm ²
Throat Area	135cm ²
Impeller Width	42mm
No. of Vanes	6
Volute Construction - Single Volute	
Shaft : ES-3	



2900 RPM